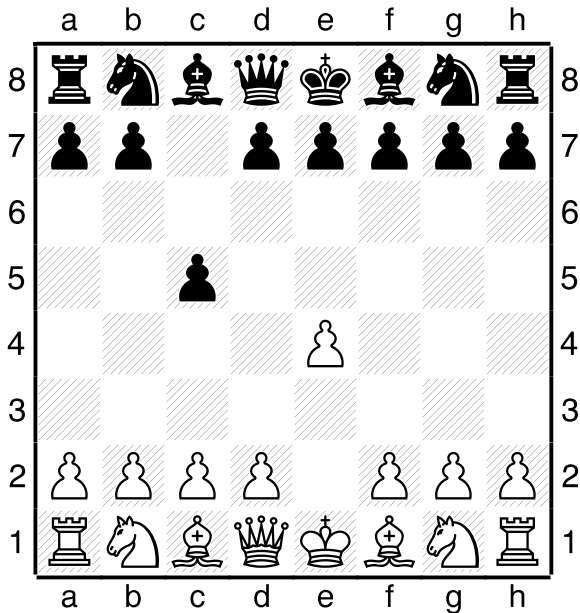


# THE SICILIAN DEFENCE

It starts:

1. e2-e4 c7-c5

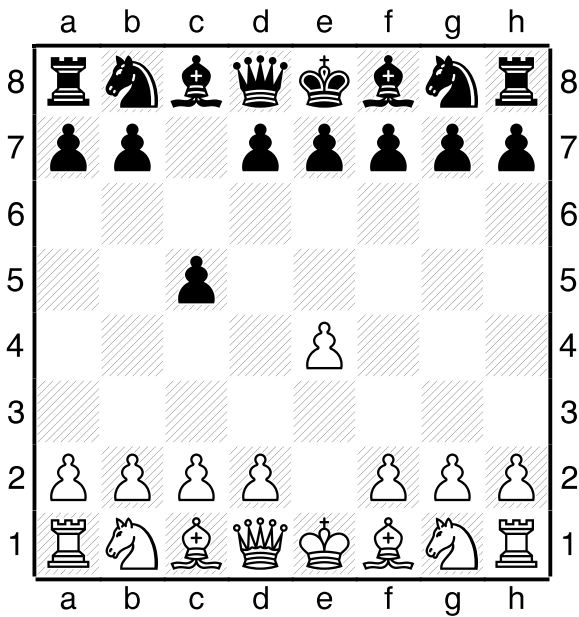


**WHITE SAYS:**

Ha! What's that pawn doing over there? You're giving me a free hand on the King side and I'll use it to attack you as hard as I can by throwing my pawns and pieces at your king.

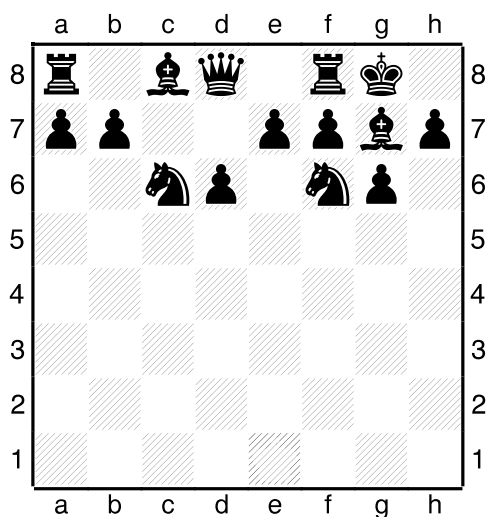
**BLACK SAYS:**

You're welcome to the King side. I'm going to attack you on the Queen side. If I can't mate you I'll take advantage of your King side weaknesses to win the ending.



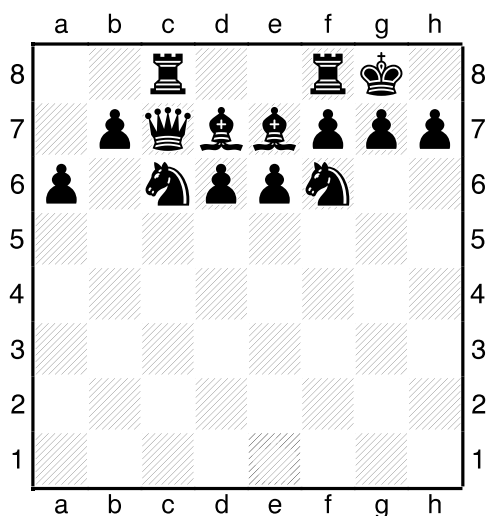
## What should White do next?

The usual plan is for White to play Ng1-f3 on move 2 and d2-d4 on move 3. He will then attack on the King side using both pawns and pieces. Meanwhile Black has a choice of Pawn formations: d6 and g6 (the DRAGON formation, d6 and e6 (the SCHEVENINGEN formation, d6 and e5 (the BOLES LAVSKY formation).



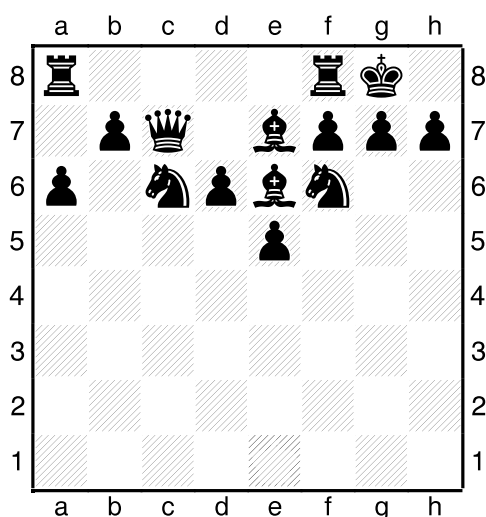
The DRAGON formation.

Don't play e5: it blocks in your Bishop on g7 and weakens your pawn on d6. Attack down the c-file and on the Q-side using pieces and pawns.



The SCHEVENINGEN formation.

Black sets up a solid position in the centre of the board. Attack on the Q-side, often with your b-pawn. Look for the opportunity to play d6-d5 to open up the centre.



The BOLESLAVSKY formation

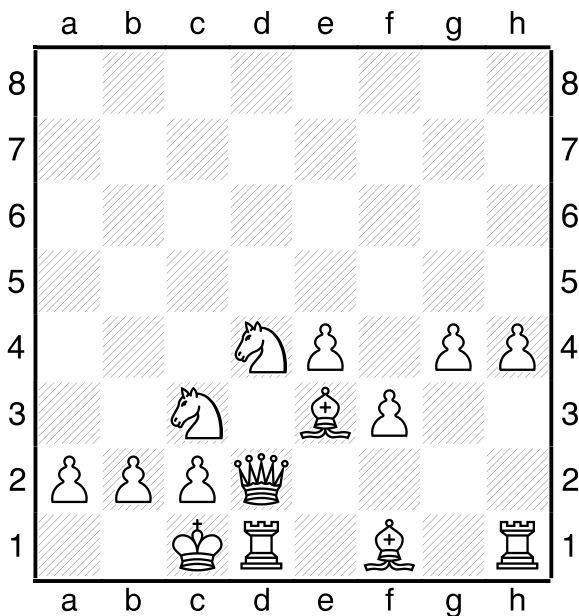
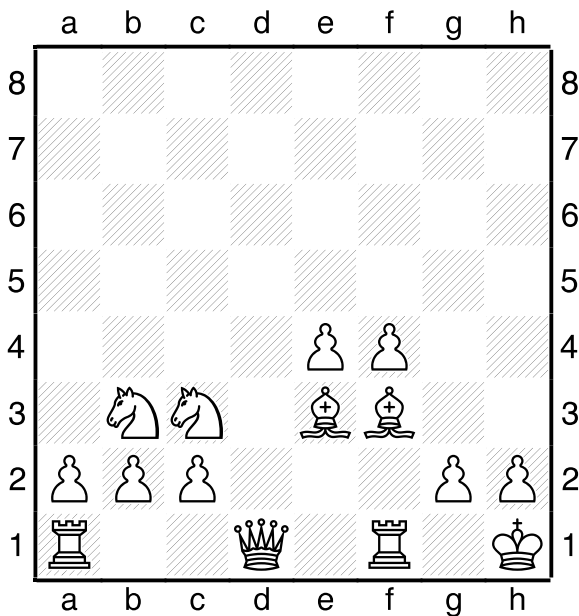
The battle rages over the d5 square. If White establishes a Knight on d5 he will have a big advantage. If Black plays d6-d5 successfully he will obtain at least an equal position.

## A classical attacking position for White in the Sicilian Defence

If you head for this position you won't go far wrong. Note that White has played Nd4-b3 to avoid exchanges and Kg1-h1 to get his King off the open diagonal. He will probably continue with g2-g4 followed by either f4-f5 or g4-g5 with a King-side attack. The Queen often moves from d1 to e1.

## A modern attacking position for White in the Sicilian Defence.

Often played against the Dragon Variation: White usually plays Bf1-c4 and not always g2-g4. Be3-h6 will exchange off Black's Bishop on g7 and h4-h5, often as a sacrifice, will open up the h-file. White hopes to mate on h7 or h8. This set-up can also be played against other Black systems.



## Ideas for White:

1. Don't play Bf1-b5 in the Open Sicilian - it only leads to exchanges.
2. Don't play Nd4xc6 unless your next move is going to be e4-e5.
3. Attack with your pawns: it's often worth sacrificing a pawn to open lines on the King side.
4. If Black plays e7-e5 before a7-a6 it's the best reply is usually Nd4-b5, aiming for d6.
5. In the Dragon Variation, if you play Bc1-e3 you must either play f2-f3 or Bf1-e2 to avoid Nf6-g4, trying to exchange off your strongest minor piece.
6. You can only play the Open Sicilian against strong (150+) opponents if you're prepared to do a lot of work. You may be better off learning one of the Anti-Sicilian lines at the end of the lesson.

## Ideas for Black:

1. The main idea of the Sicilian Defence is a Queen-side attack. You should be playing moves like Qd8-c7, Ra8-c8, a7-a6, b7-b5.
2. Leave your e-pawn on e7 in the Dragon Variation. If you move it you weaken d6 and on e5 it blocks in your Bishop on g7.
3. Don't play e7-e5 if White has already played either Bf1-c4 or Bc1-g5. Both these moves help him control d5.
4. Don't play a7-a6 in the Dragon - it's usually too slow.
5. If your opponent throws his K-side pawns forward try to play either d5 or e5.
6. Make sure you know how to play against the Anti-Sicilian lines at the end of the lesson.

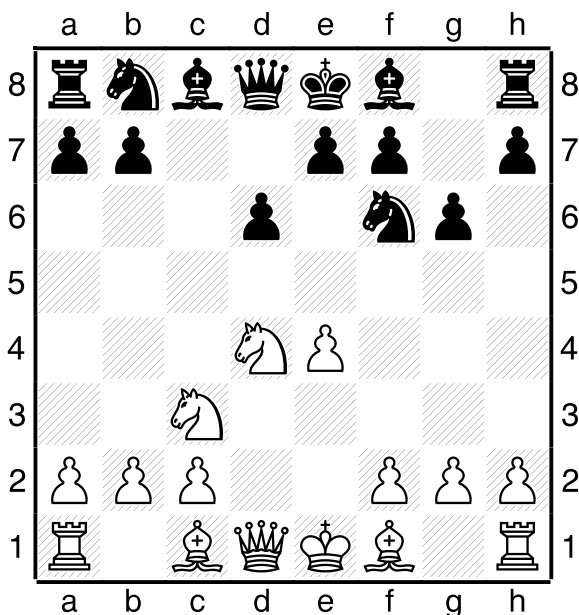
# THE DRAGON VARIATION

1. e2-e4 c7-c5
2. Ng1-f3 d7-d6
3. d2-d4 c5xd4
4. Nf3xd4 Ng8-f6

4... g7-g6 is possible but 5. c2-c4 is a strong reply for White.

5. Nb1-c3 g7-g6

Black prepares to develop his Bishop on g7.

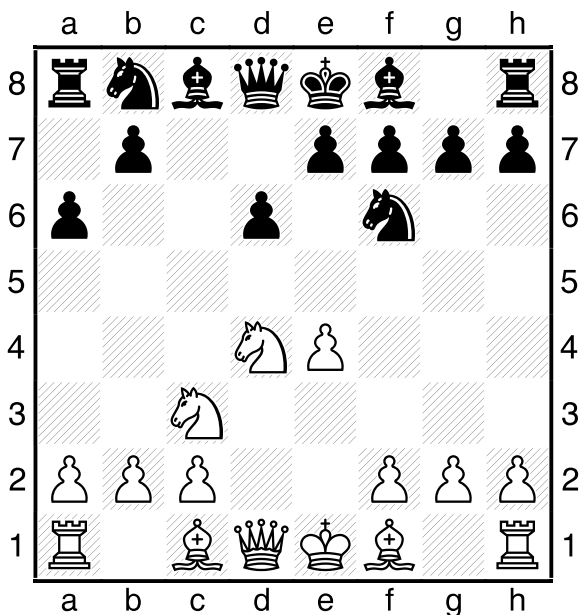


White's main lines are now 6. Bc1-e3 Bf8-g7 7. f2-f3, the Yugoslav Attack and 6. Bf1-e2 Bf8-g7 7. Bc1-e3, the Classical Variation).

# THE NAJDORF VARIATION

1. e2-e4 c7-c5
2. Ng1-f3 d7-d6
3. d2-d4 c5xd4
4. Nf3xd4 Ng8-f6
5. Nb1-c3 a7-a6

This is partly a waiting move: Black waits to see where White is putting his Bishops before deciding whether to play e7-e6 or e7-e5, and partly the start of a Queen-side attack.

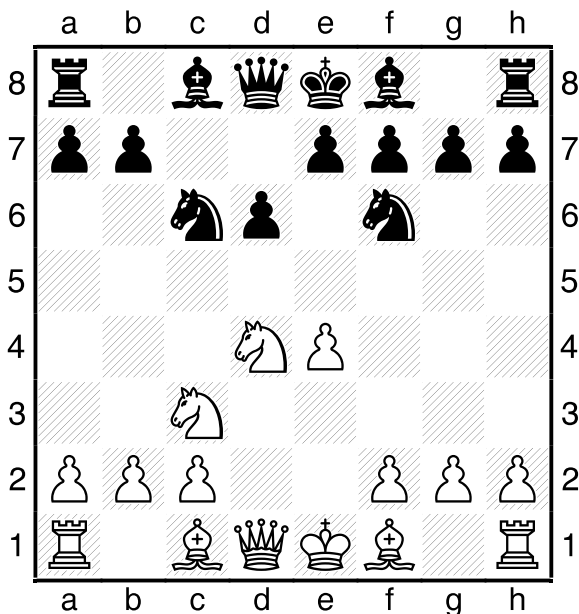


White now has many good moves, Bc1-g5, Bc1-e3, Bf1-c4, Bf2-e2, f2-f4. If he plays either Bg5 or Bc4 Black should NOT play e7-e5.

# THE CLASSICAL VARIATION

1. e2-e4 c7-c5
2. Ng1-f3 d7-d6
3. d2-d4 c5xd4
4. Nf3xd4 Ng8-f6
5. Nb1-c3 Nb8-c6

5... e7-e6 is also possible, heading straight for the Scheveningen formation.



White has a similar choice of moves. Note that Black can equally well play Nb8-c6 or e7-e6 on move 2 if he wants to play the Scheveningen system. Each move order gives White different options.



# THE ANTI-SICILIANS

## THE MORRA GAMBIT

1. e2-e4 c7-c5
2. d2-d4 c5xd4
3. c2-c3 d4xc3
4. Nb1xc3

If you like gambit play this could be for you. White sacrifices a pawn to gain a lead in development.

## THE CLOSED SICILIAN

1. e2-e4 c7-c5
2. Nb1-c3 Nb8-c6
3. g2-g3

White will continue with Bf1-g2, d2-d3 and f2-f4. If you like building up a King side attack from a closed position this is a good choice. 2. f2-f4 can lead to similar positions.

## **THE ALAPIN VARIATION**

1. e2-e4 c7-c5
2. c2-c3

White aims to build up a strong centre with d2-d4. Black can reply 2... Ng8-f6 3. e4-e5 Nf6-d5 4. d2-d4, or 2... d7-d5 3. e4xd5 Qd8xd5 4. d2-d4, or 2... e7-e6 3. d2-d4 d7-d5 when 4. e4-e5 is a French. If you like open piece play this variation is a good choice.

## **THE Bb5 VARIATION**

1. e2-e4 c7-c5
2. Ng1-f3 d7-d6
3. Bf1-b5+

2... Nb8-c6 3. Bf1-b5 is also good. White will usually play 0-0, Rf1-e1, c2-c3 and d2-d4, like a Ruy Lopez. If you like the Ruy Lopez why not try this line?

**SICILIAN DEFENCE  
DRAGON VARIATION**

1. e2-e4 c7-c5
2. Ng1-f3 d7-d6
3. d2-d4 c5xd4
4. Nf3xd4 Ng8-f6
5. Nb1-c3 g7-g6

**SICILIAN DEFENCE  
NAJDORF VARIATION**

1. e2-e4 c7-c5
2. Ng1-f3 d7-d6
3. d2-d4 c5xd4
4. Nf3xd4 Ng8-f6
5. Nb1-c3 a7-a6

**SICILIAN DEFENCE  
RICHTER-RAUZER ATTACK**

1. e2-e4 c7-c5
2. Ng1-f3 d7-d6
3. d2-d4 c5xd4
4. Nf3xd4 Ng8-f6
5. Nb1-c3 Nb8-c6
6. Bc1-g5

**SICILIAN DEFENCE  
SOZIN-VELIMIROVIC ATTACK**

1. e2-e4 c7-c5
2. Ng1-f3 d7-d6
3. d2-d4 c5xd4
4. Nf3xd4 Ng8-f6
5. Nb1-c3 Nb8-c6
6. Bf1-c4

**SICILIAN DEFENCE  
SCHEVENINGEN VARIATION**

1. e2-e4 c7-c5
2. Ng1-f3 e7-e6
3. d2-d4 c5xd4
4. Nf3xd4 Ng8-f6
5. Nb1-c3 d7-d6

**SICILIAN DEFENCE  
TAIMANOV VARIATION**

1. e2-e4 c7-c5
2. Ng1-f3 e7-e6
3. d2-d4 c5xd4
4. Nf3xd4 Nb8-c6
5. Nb1-c3 a7-a6

**SICILIAN DEFENCE  
MAROCZY BIND**

1. e2-e4 c7-c5
2. Ng1-f3 e7-e6
3. d2-d4 c5xd4
4. Nf3xd4 a7-a6
5. c2-c4 Ng8-f6

**SICILIAN DEFENCE  
ACCELERATED DRAGON**

1. e2-e4 c7-c5
2. Ng1-f3 Nb8-c6
3. d2-d4 c5xd4
4. Nf3xd4 g7-g6
5. c2-c4 Bf8-g7

**SICILIAN DEFENCE  
SVESHNIKOV VARIATION**

1. e2-e4 c7-c5
2. Ng1-f3 Nb8-c6
3. d2-d4 c5xd4
4. Nf3xd4 Ng8-f6
5. Nb1-c3 e7-e5

**SICILIAN DEFENCE  
MORRA GAMBIT**

1. e2-e4 c7-c5
2. d2-d4 c5xd4
3. c2-c3 d4xc3
4. Nb1xc3 Nb8-c6
5. Ng1-f3 d7-d6

**SICILIAN DEFENCE  
QUEEN CAPTURE VARIATION**

1. e2-e4 c7-c5
2. Ng1-f3 d7-d6
3. d2-d4 c5xd4
4. Qd1xd4 Nb8-c6
5. Bf1-b5 Bc8-d7

**SICILIAN DEFENCE  
ROSSOLIMO VARIATION**

1. e2-e4 c7-c5
2. Ng1-f3 Nb8-c6
3. Bf1-b5 g7-g6
4. 0-0 Bf8-g7
5. c2-c3 Ng8-f6

**SICILIAN DEFENCE  
MOSCOW VARIATION**

1. e2-e4 c7-c5
2. Ng1-f3 d7-d6
3. Bf1-b5+ Bc8-d7
4. Bb5xd7+ Qd8xd7
5. 0-0 Nb8-c6

**SICILIAN DEFENCE  
ALAPIN VARIATION (1)**

1. e2-e4 c7-c5
2. c2-c3 Ng8-f6
3. e4-e5 Nf6-d5
4. d2-d4 c5xd4
5. Ng1-f3 Nb8-c6

**SICILIAN DEFENCE  
ALAPIN VARIATION (2)**

1. e2-e4 c7-c5
2. c2-c3 d7-d5
3. e4xd5 Qd8xd5
4. d2-d4 e7-e6
5. Ng1-f3 Ng8-f6

**SICILIAN DEFENCE  
CLOSED VARIATION**

1. e2-e4 c7-c5
2. Nb1-c3 Nb8-c6
3. g2-g3 g7-g6
4. Bf1-g2 Bf8-g7
5. d2-d3 d7-d6

**SICILIAN DEFENCE  
GRAND PRIX ATTACK (1)**

1. e2-e4 c7-c5
2. f2-f4 Nb8-c6
3. Nb1-c3 d7-d6
4. Ng1-f3 g7-g6
5. Bf1-c4 Bf8-g7

**SICILIAN DEFENCE  
GRAND PRIX ATTACK (2)**

1. e2-e4 c7-c5
2. f2-f4 e7-e6
3. Ng1-f3 d7-d5
4. e4xd5 e6xd5
5. Bf1-b5+ Bc8-d7